



 BRADY®

# Automated cable identification

Increase production output

# Automate your identification



If you're still using old technology, the time to get work done seems to disappear. Old processes slow you down, rework creates bottlenecks and errors can bring things to a full stop. Help keep things running smoothly by automating your identification.

Brady offers a family of print-and-apply machines that take the manual labelling process out of your hands so you can move through your work more efficiently and with less rework. With these modern automated machines, you can:

- **Increase productivity** - cut labelling time in half to keep your output numbers high
- **Reduce errors** - get sustainable, consistent identification without the rework
- **Make changes fast** - intuitive full-colour touchscreen and user interface make changing settings easy

## Choose your solution

### Wraptor A6500 Wrap Printer Applicator

- Print and apply self-laminating labels in five seconds
- Automate time-consuming labelling tasks
- Identify wires from 1.524 mm to 15.24 mm diameter

### Wraptor A6200 Wrap Printer Applicator

- Speed up production in cellular manufacturing
- Easy to transport, set up and operate
- Compact design fits well at workstations

### BradyPrinter A5500 Flag Printer Applicator

- Print and apply flags in five seconds
- Boost productivity with automated labelling
- Apply flag labels free of wrinkles, skew and edge mismatch

### Flagmaker

- Quickly and consistently identify large volumes of cables with flag labels of 15 to 50 mm wide, and up to 150 mm long
- Print, encode and apply RFID flag labels and enhance your cable identification with track and trace capabilities.
- Average time (print and apply) per label: 3-4 seconds



**AUTOMATED PRINT  
AND APPLY**



**SPECIALISED HIGH  
QUALITY IDENTIFICATION**



**SOFTWARE**



**SUPPORT AND  
SERVICES**

# Automated cable identification

## Wrap-around labels

For cellular manufacturing and process-driven assembly, workstation flexibility is key to improving workflows. Here's your opportunity to finally get what you need. Designed to increase efficiency, the **Wraptor A6200 Wrap Printer Applicator**:

- fits into tight spaces
- can be moved easily
- prints and wraps wires in 7 seconds

This makes the Wraptor A6200 a high-value, labour-saving solution that's automated - and affordable.



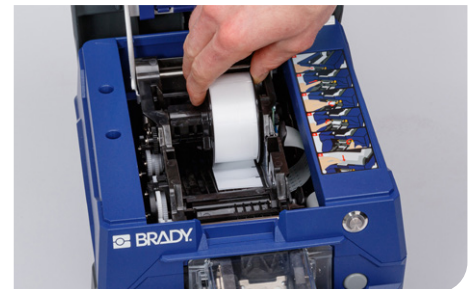
► **Product Specifications on page 7**

Article No.	Description
176480	Wraptor™ A6200 Wrap Printer Applicator EU
176479	Wraptor™ A6200 Wrap Printer Applicator EU Wi-Fi
176478	BradyPrinter Wraptor™ A6200 Wrap Printer Applicator and Rewinder Kit Wi-Fi - EMEA
176477	Wraptor A6200 Wrap Printer Applicator and Rewinder Kit - NA
176476	Wraptor™ A6200 Wrap Printer Applicator NA
176475	Wraptor™ A6200 Wrap Printer Applicator NA Wi-Fi
170976	Wraptor™ A6200 Bulk Label Roll Adapter
151626	Rewinder for BradyPrinter Wraptor™ A6200 Wrap Printer Applicator



## ► Wraptor A6200 Rewinder

Keep your workspace tidy with the Wraptor A6200 Rewinder. It captures used liner and neatly stores it with a space-saving design. Rewinds used material liner, keeping work area free of debris. Seamlessly couples with the Wraptor A6200 Wrap Printer Applicator.



**AUTOMATED PRINT AND APPLY**



**SPECIALISED HIGH QUALITY IDENTIFICATION**



**SOFTWARE**



**SUPPORT AND SERVICES**

# Automated cable identification

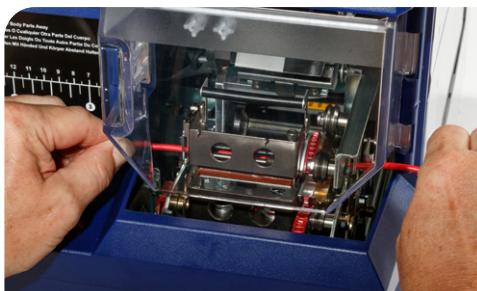


## Wrap-around labels

The **Wraaptor A6500 Wrap Printer Applicator** can significantly increase production output by identifying cables with wrap-around labels in 5 seconds. It automatically prints and applies the label on a wide range of insertable cables, saving up to 10 seconds per identified cable.

### The Wraaptor A6500 Wrap Printer Applicator:

- can greatly increase production output by printing and applying wrap-around cable labels in 5 seconds
- is easy to operate because it can identify a wide range of cables between 1.52 mm and 15.24 mm diameter via a modern user interface with full colour touch screen
- Wraaptor A6500 fibre optic units come with “soft jaws” preventing any cable damage
- is easy to implement in a variety of production environments thanks to USB ports and ethernet connectivity
- can be used with Brady Workstation apps to design, print and apply a wide range of labels
- allows saving and processing commonly used labels
- can be integrated with Schleuniger and Komax Cut & Strip Machines



### ▶ Product Specifications on page 7

Article No.	Description
149242	Wraaptor A6500 Wire ID Printer Applicator - US
149244	Wraaptor A6500 Wire ID Printer Applicator - EU/UK
152226	Wraaptor™ A6500 Fibre Optic Wrap Printer Applicator



Calculate what you could save by applying labels with the Wraaptor A6500!

**Click or scan the QR-code**



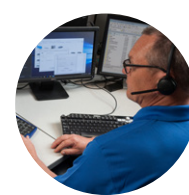
**AUTOMATED PRINT AND APPLY**



**SPECIALISED HIGH QUALITY IDENTIFICATION**



**SOFTWARE**



**SUPPORT AND SERVICES**

# Automated cable identification

## Flag labels

### The BradyPrinter A5500 Flag Printer Applicator:

- can help save money by eliminating the need to print labels in advance and the time needed to apply them by hand
- can increase production output by sustainably printing and applying flag labels in 5 seconds
- can identify a wide range of cables via a modern user interface with full colour touch screen
- BradyPrinter A5500 fibre optic unit comes with “soft jaws” preventing any cable damage
- is easy to implement in production environments with USB ports and ethernet connectivity

Experienced operators can print and manually apply a flag label on a cable in 15 seconds. With the BradyPrinter A5500 Flag Printer Applicator they can significantly increase production output by flagging cables in 5 seconds.

## Increase production output and save money

The BradyPrinter A5500 helps increase production output and enhance identification quality by automatically printing and applying flag labels.

It can save quite a lot of money by identifying cables in 5 seconds and by eliminating the need to print labels in advance and the time needed to apply them by hand. The BradyPrinter A5500 enables 300 dpi prints for barcodes, logos and diagrams, and applies reliable cable flags that can communicate a lot of information.

## A wide range of cables

The BradyPrinter A5500 is very flexible and, without any adjustment, can identify cables with 1.52 mm up to 15.24 mm in diameter and apply labels with widths up to 50.8 mm and lengths between 19.05 mm and 76.20 mm. Its full colour touch screen and modern user interface further enhance the printer's flexibility and ease of use.

## Easy to implement

USB-ports and ethernet connectivity make the BradyPrinter A5500 practical to implement in a variety of production environments.

Coupled with Brady Workstation apps for easy flag label design, barcoding and serialisation, the BradyPrinter A5500 becomes a highly practical process efficiency increaser.



▶ **Product Specifications on page 8**

Article No.	Description
151187	BradyPrinter A5500 Flag Printer Applicator - EMEA
151186	BradyPrinter A5500 Flag Printer Applicator Wi-Fi - EMEA
151185	BradyPrinter A5500 Flag Printer Applicator - US
151184	BradyPrinter A5500 Flag Printer Applicator Wi-Fi - US



Calculate what you could save by applying labels with the BradyPrinter A5500!

**Click or scan the QR-code**



**AUTOMATED PRINT AND APPLY**



**SPECIALISED HIGH QUALITY IDENTIFICATION**



**SOFTWARE**



**SUPPORT AND SERVICES**

# Automated cable identification



## The Flagmaker:

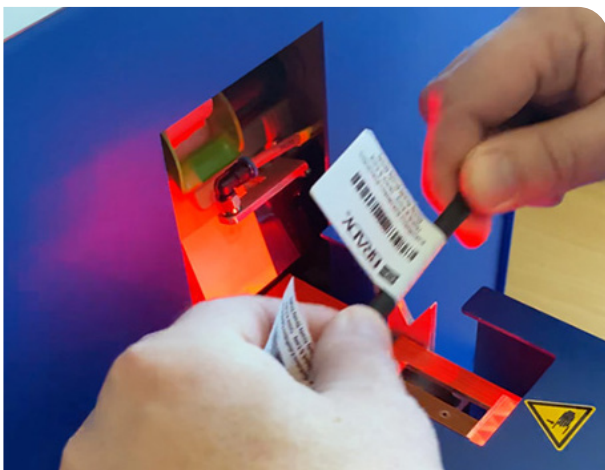
The Flagmaker can replace the tedious manual application of a variety of flag labels on a wide range of cables. Print and apply flag labels in just a few seconds to considerably increase production output.

## Print & apply flag labels in seconds

- Quickly and consistently identify large volumes of cables with flag labels of 15 to 50 mm wide, and up to 115 mm long
- Prints data received from almost any labelling software and can also be operated in stand-alone mode
- Prints on a range of reliable label materials that remain legible and stay attached in challenging conditions
- Compact design and hardware interfaces allow further automation
- Cable diameter approx. 1 - 20 mm
- Average time (print and apply) per label: 3-4 seconds.

▶ Product Specifications on page 8

Article No.	Description
308846	Flagmaker - EU



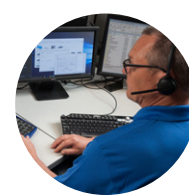
**AUTOMATED PRINT  
AND APPLY**



**SPECIALISED HIGH QUALITY  
IDENTIFICATION**



**SOFTWARE**



**SUPPORT AND  
SERVICES**

# Wrap printer applicators

## Wraptor A6200 Wrap Printer Applicator / Wraptor A6500 Wrap Printer Applicator Specifications



Printer	Wraptor A6200 Wrap Printer Applicator	Wraptor A6500 Wrap Printer Applicator
Includes	Printer Applicator A6200, Licence for Brady Workstation Software suites, Printer Ribbon A62-R4300, Roll of Vinyl Clear/White Labels A62-3-427, USB Cable, Quick Start Guide, Power Cord and AC Adapter	Wraptor™ A6500 Wire ID Printer Applicator, including Brady Workstation Product and Wire ID label design and printing software, Wraptor™ print driver, USB cable, power cord, roll of WRAP-4-427 and roll of R-4302 ribbon, Wraptor™ A6500 Wire ID Printer Applicator, including Brady Workstation Product and Wire ID label design and printing software, Wraptor™ print driver, USB cable, power cord, roll of WRAP-4-427 and roll of R-4302 ribbon
Applications	Wire and cable labelling, Data and telecommunications labelling, Electrical labelling	Data and telecommunications labelling, Electrical labelling, Wire and cable labelling
Print Speed (mm/sec)	38.10 mm/s	76.00 mm/s
Internal Memory Capacity	32 GB, expandable through USB	32 GB, expandable through USB
Colour Capability	Monocolour	Monocolour
Weight (kg)	4.08 kg	38.50 kg
Width x Height x Depth (mm)	224.79 x 210.82 x 297.18	368.30 x 450.90 x 571.50
Operating Temperature	15°C - 32°C	10°C - 40°C
Operating Humidity	10%-80% (non-condensing)	20%-80% (RH non-condensing)
Storage Temperature	0°C - 60°C	0°C - 60°C
Warranty	1 year	1 year
<b>Materials Supported</b>		
Materials Supported	Nylon Cloth, Self-laminating Vinyl	Nylon Cloth, Polyimide, Self-laminating Vinyl, Self-laminating Vinyl, Self-laminating Vinyl
Continuous vs Die-cut Labels	Die-cut	Die-cut
Max. Label Width (mm)	25.40 mm	50.80
Min. Label Width (mm)	12.70 mm	12.70 mm
Wire Diameter Range (mm)	1.19 mm to 6.35 mm	1.52 mm to 15.24 mm*
Recommended Usage per Day	500	7000
<b>Power supply</b>		
Battery Type	Lithium-manganese Battery	Lithium-manganese Battery
Power Supply	AC Adaptor	AC Adaptor
<b>Display</b>		
Display	Colour LCD Touchscreen	Colour LCD Touchscreen
Display Resolution	320 x 240 px	320 x 240 px
<b>Fonts/graphics/symbologies</b>		
Built-in Fonts	Arial, Arial 65, Courier New, Tahoma, Times New Roman	Arial, Arial 65, Courier New, Tahoma, Times New Roman
Bar Code Type	Codablock A, Codablock F, Code 128A, Code 128B, Code 128C, Code 39, Code 93, EAN-13, EAN-8, Industrial 2 of 5, MSI, Plessey, UPC-A, UPC-E	Codablock A, Codablock F, Code 128A, Code 128B, Code 128C, Code 39, Code 93, EAN-13, EAN-8, Interleaved 2 of 5, MSI, Plessey, UPC-A, UPC-E, Data Matrix, QR code
<b>Printing functions</b>		
Print Resolution (dpi)	300 dpi	300 dpi
<b>Software &amp; connectivity</b>		
Connectivity Options	Ethernet, USB, Wi-Fi	Ethernet, USB
Software Compatibility	Brady Workstation Windows based driver for 3rd party software use	Brady Workstation Windows based driver for 3rd party software use

\*Fibre Optic Model: 1.19 to 10.92 mm



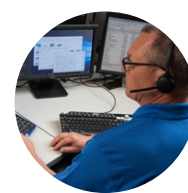
**AUTOMATED PRINT  
AND APPLY**



**SPECIALISED HIGH  
QUALITY IDENTIFICATION**



**SOFTWARE**



**SUPPORT AND  
SERVICES**

# Flag printer applicators

## A5500 Flag Label Printer Applicator Specifications Flagmaker Specifications



Printer	BradyPrinter A5500 Flag Printer Applicator	Flagmaker
Includes	BradyPrinter A5500 Flag Printer Applicator, Brady Workstation Product and Wire ID Suite, A5500 print driver, USB Cable, power cord, roll of A55-4-483, roll of SSR6002 ribbon	Flagmaker-EU, USB cable, Power Cord
Applications	Wire and cable labelling	Data and telecommunications labelling, Electrical labelling, Wire and cable labelling
Print Speed (mm/sec)	76.00 mm/s	150 mm/s
Internal Memory Capacity	32 GB, expandable through USB	256 MB RAM, 50 MB IFFS Flash, SD card up to 512 GB
Colour Capability	Monocolour	Monocolour
Weight (kg)	34.00 kg	35 kg
Width x Height x Depth (mm)	383.54 x 452.12 x 604.52	352 x 505 x 700
Operating Temperature	10°C - 40°C	5°C - 40°C
Operating Humidity	20%-80% (RH non-condensing)	10%-85% (RH non-condensing)
Storage Temperature	0°C - 60°C	0°C - 60°C
Warranty	1 year	2 years
<b>Materials supported</b>		
Materials Supported	Paper, Polyester, Polypropylene, Polyvinylfluoride	Polyester, Polypropylene, Polyvinylfluoride, Paper
Continuous vs Die-cut Labels	Die-cut	Die-cut
Max. Label Width (mm)	50.80	50 mm
Min. Label Width (mm)	25.40 mm	15 mm
Wire Diameter Range (mm)	1.52 mm to 15.24 mm*	1 mm to 20 mm
Recommended Usage per Day	7000	7000
<b>Power supply</b>		
Battery Type	Lithium-manganese Battery	Lithium-manganese Battery
Power Supply	AC Adaptor	AC Adaptor
<b>Display</b>		
Display	Colour Touchscreen	Colour LCD Screen
Display Resolution	320 x 240 px	320 x 240 px
<b>Fonts/graphics/symbologies</b>		
Built-in Fonts	Arial, Arial 65, Courier New, Tahoma, Times New Roman	Bitmap Default Font - 12x12 dots, Bitmap Default Font - 16x16 dots, Bitmap Default Font - 16x32 dots, Monospace 821, OCR-A Size I, OCR-B, Swiss 721, Swiss 721 Bold
	Supports 1D/Linear barcodes, Supports 2D barcodes	Codabar, Codablock F, Code 128A, Code 128B, Code 128C, Code 39, Code 39 Full ASCII, Code 93, Deutsche Post Identcode, Deutsche Post Leitcode, EAN/UCC 128, EAN/UPC, EAN/UPC Extension 2, EAN/UPC Extension 5, EAN-13, EAN-8, FIM, GS1 DataBar, GS1 DataBar Limited, GS1 DataBar Stacked, GS1 DataBar Stacked Omnidirectional, GS1 DataBar Truncated, GS1-128, HIBC, Interleaved 2 of 5, JAN-8, MSI, Plessey, POSTNET, UPC-A, UPC-E, UPC-E0, Aztec, Data Matrix, GS1 DataMatrix, MaxiCode, MicroPDF417, PDF417, QR code
<b>Printing functions</b>		
Print Resolution (dpi)	300 dpi	300 dpi
<b>Software &amp; connectivity</b>		
Connectivity Options	Ethernet, USB, Wi-Fi	Ethernet, I/O connection (optional), Serial, USB, Wi-Fi (optional)
Software Compatibility	Brady Workstation, Windows based driver for 3rd party software use	Brady Workstation, Windows based driver for 3rd party software use

\*Fibre Optic Model: 1.19 to 9.65 mm



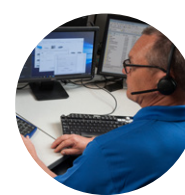
**AUTOMATED PRINT AND APPLY**



**SPECIALISED HIGH QUALITY IDENTIFICATION**



**SOFTWARE**



**SUPPORT AND SERVICES**

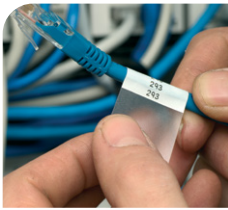
# Durable auto-apply cable labels



## Auto-apply cable wraps

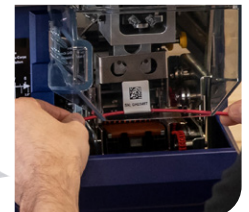
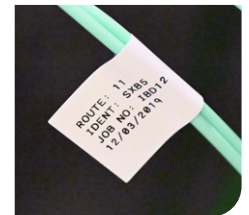
Brady's wrap around cable labels offer excellent print quality, high resistances versus extreme temperatures, chemicals and fuels and a good fading and abrasion resistance.

- **Self-laminating vinyl cable labels (B-417/B-427)** have a durable translucent vinyl film with an acrylic pressure sensitive adhesive. The labels are equipped with a white (or other colour options) thermal transfer printable zone and a transparent overlaminating area, which wraps around the label to protect the text from fading and abrasion.
- **Polyamide coated nylon cloth (B-499)** suitable for wiremarking and general labelling applications. This material meets the halogen free requirements as per the DIN norm.
- **Flame retardant cable wrap labels (B-472)** are self-extinguishing and prevent flames from propagating. Their special topcoat enables crystal clear THT print quality and excellent chemical resistance. These labels are ideal for high temperature applications.



Cable Flag Labels are an excellent identification solution when more information or a barcode is needed to properly identify a cable or wire.

- **B-424** is a top-coated, thermal transfer-printable label material with a permanent latex adhesive. It is designed for use in labeling applications requiring a low-cost, general-purpose labeling material.
- White **B-425** thermal transfer printable Polypropylene is ideal for labeling applications requiring excellent solvent resistance and print performance.
- **B-437** is a self-extinguishing label material used for wire and cable marking applications, particularly in aerospace, defense and mass transit industries.
- The **B-483** polyester cable label with rubber based adhesive and glossy finish is designed for high adhesion and is available in white.



Click or scan the QR-code to view the Material Selection Tool



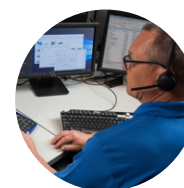
**AUTOMATED PRINT AND APPLY**



**SPECIALISED HIGH QUALITY IDENTIFICATION**



**SOFTWARE**



**SUPPORT AND SERVICES**

# Printer materials

The following part numbers are specially designed for use with the **Wraprotor A6200 Wrap Printer Applicator** printer only.



## Self-Laminating Vinyl Wire and Cable Labels

Self-Laminating Vinyl is an excellent material for wire and cable identification. This material has good clarity, conformability and is self-extinguishing. Provided in a self-laminated format with a white printable zone and translucent overlaminating area to protect text. Durable, permanent acrylic adhesive has outstanding water and oil resistance.

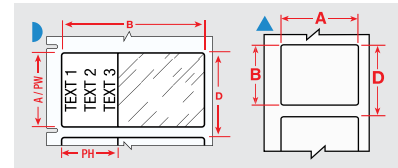
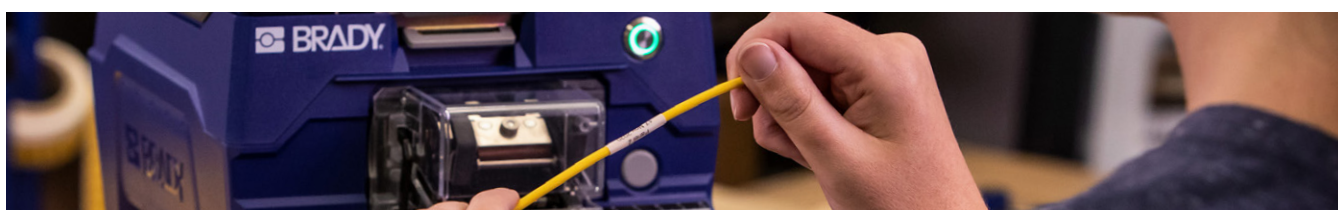


Diagram	Art. No.	Order Reference	Colour	Label Width A (mm)	Label Height B (mm)	Printable Area Width PW (mm)	Printable Area Height PH (mm)	Vertical Repeat D (mm)	Min. Wire Diameter (mm)	Max. Wire Diameter (mm)	Labels per Roll	Printer Ribbon Series
<b>B-417: Self-laminating Vinyl</b>												
▶	152200	A62-1-417	White	12.70	19.05	12.70	9.53	22.23	1.52	3.05	750	R4300
▶	152201	A62-14-417	White	12.70	31.75	12.70	9.53	34.93	3.05	6.10	450	R4300
▶	152202	A62-15-417	White	25.40	19.05	25.40	9.53	22.23	1.52	3.05	750	R4300
▶	152203	A62-3-417	White	25.40	31.75	25.40	12.70	34.93	3.05	6.10	450	R4300
▶	152220	A62-4-417	White	25.40	38.10	25.40	12.70	41.40	4.06	6.35	400	R4300
▶	152221	A62-11-417	White	12.70	38.10	12.70	12.70	41.40	4.06	6.35	400	R4300
▶	152222	A62-2-417	White	25.40	25.40	25.40	9.53	28.58	2.54	5.08	550	R4300
▶	170984	BA62-1-417	White	12.70	19.05	12.70	9.53	22.23	1.52	3.05	6400	R4300
▶	170985	BA62-14-417	White	12.70	31.75	12.70	9.53	34.93	3.05	6.10	4000	R4300
▶	170986	BA62-11-417	White	12.70	38.10	12.70	12.70	41.40	4.06	6.35	3400	R4300
▶	170987	BA62-15-417	White	25.40	19.05	25.40	9.53	22.23	1.52	3.05	6400	R4300
▶	170988	BA62-2-417	White	25.40	25.40	25.40	9.53	28.58	2.54	5.08	5000	R4300
▶	170989	BA62-3-417	White	25.40	31.75	25.40	12.70	34.93	3.05	6.10	4000	R4300
▶	170990	BA62-4-417	White	25.40	38.10	25.40	12.70	41.40	4.06	6.35	3400	R4300
<b>B-427: Self-laminating Vinyl</b>												
▶	151007	A62-1-427	White	12.70	19.05	12.70	9.53	22.23	1.52	3.05	850	R4300
▶	151008	A62-14-427	White	12.70	31.75	12.70	9.53	34.93	3.05	6.10	500	R4300
▶	151009	A62-15-427	White	25.40	19.05	25.40	9.53	22.23	1.52	3.05	850	R4300
▶	151010	A62-3-427	White	25.40	31.75	25.40	12.70	34.93	3.05	6.10	500	R4300
▶	152223	A62-4-427	White	25.40	38.10	25.40	12.70	41.40	4.06	6.35	450	R4300
▶	152224	A62-11-427	White	12.70	38.10	12.70	12.70	41.40	4.06	6.35	450	R4300
▶	152225	A62-2-427	White	25.40	25.40	25.40	9.53	28.58	2.54	5.08	650	R4300
▶	170977	BA62-1-427	White	12.70	19.05	12.70	9.53	22.23	1.52	3.05	7500	R4300
▶	170978	BA62-14-427	White	12.70	31.75	12.70	9.53	34.93	3.05	6.10	4700	R4300
▶	170979	BA62-11-427	White	12.70	38.10	12.70	12.70	41.40	4.06	6.35	4000	R4300
▶	170980	BA62-15-427	White	25.40	19.05	25.40	9.53	22.23	1.52	3.05	7500	R4300
▶	170981	BA62-2-427	White	25.40	25.40	25.40	9.53	28.58	2.54	5.08	5800	R4300
▶	170982	BA62-3-427	White	25.40	31.75	25.40	12.70	34.93	3.05	6.10	4700	R4300
▶	170983	BA62-4-427	White	25.40	38.10	25.40	12.70	41.40	4.06	6.35	4000	R4300
<b>B-499: Nylon Cloth</b>												
▲	151011	A62-7-499	White	12.70	19.05	-	-	22.23	1.52	6.10	600	R4300
▲	151012	A62-16-499	White	12.70	25.40	-	-	28.58	3.30	6.35	450	R4300
▲	151013	A62-15-499	White	25.40	19.05	-	-	22.23	1.52	6.10	600	R4300
▲	151014	A62-13-499	White	25.40	25.40	-	-	28.58	3.30	6.35	450	R4300
▲	170991	BA62-7-499	White	12.70	19.05	-	-	22.23	1.52	6.10	5200	R4300
▲	170992	BA62-16-499	White	12.70	25.40	-	-	28.58	3.30	6.35	4000	R4300
▲	170993	BA62-15-499	White	25.40	19.05	-	-	22.23	1.52	6.10	5200	R4300
▲	170994	BA62-13-499	White	25.40	25.40	-	-	28.58	3.30	6.35	4000	R4300



# Printer materials

The following part numbers beginning with "WRAP" are specially designed for use with the **Wraptor A6500 Wrap Printer Applicator** only.



## Self-laminating Vinyl

Brady's most popular wire and cable marker. Self-laminating vinyl features white printable area with a clear "tail" that wraps around marker. Tail serves as overlamine to protect the print. Superior resistance to abrasion, solvents, water, oil and dirt.

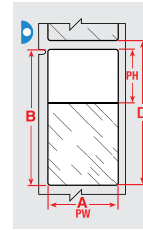


Diagram	Art. No.	Order Reference	Colour	Label Width A (mm)	Label Height B (mm)	Printable Area Width PW (mm)	Printable Area Height PH (mm)	Vertical Repeat D (mm)	Min. Wire Diameter (mm)	Max. Wire Diameter (mm)	Labels per Roll	Printer Ribbon Series
<b>B-417: Self-laminating Vinyl</b>												
▶	150510	WRAP-1-417	White	12.70	19.05	12.70	9.53	21.59	2.01	3.05	6800	R4300, R7950
▶	151872	WRAP-11-417	White	12.70	38.10	12.70	12.70	41.28	4.06	8.13	3600	R4300
▶	150511	WRAP-2-417	White	25.40	25.40	25.40	9.53	28.58	2.54	5.08	5300	R4300, R7950
▶	151870	WRAP-3-417	White	25.40	31.75	25.40	12.70	34.93	3.05	6.10	4300	R4300
▶	150512	WRAP-4-417	White	25.40	38.10	25.40	12.70	41.40	4.06	8.13	3600	R4300, R7950
▶	150509	WRAP-10-417	White	25.40	57.15	25.40	19.05	60.20	6.10	12.19	2500	R4300, R7950
▶	150513	WRAP-5-417	White	38.10	63.50	38.10	19.05	66.68	7.11	14.22	2200	R4300, 7950
▶	151873	WRAP-12-417	White	50.80	38.10	50.80	12.70	41.28	4.06	8.13	3600	R4300
▶	151871	WRAP-6-417	White	50.80	76.20	50.80	25.40	79.38	8.13	16.26	1900	R4300
<b>B-427: Self-laminating Vinyl</b>												
▶	801612	WRAP-1-427	White	12.70	19.05	12.70	9.53	22.20	2.00	3.00	6800	R4300
▶	805029	WRAP-11-427	White	12.70	38.10	12.70	12.70	41.40	4.00	8.10	3600	R4300
▶	801613	WRAP-2-427	White	25.40	25.40	25.40	9.53	28.58	2.70	5.10	5300	R4300
▶	801614	WRAP-3-427	White	25.40	31.75	25.40	12.70	34.90	3.40	6.10	4300	R4300
▶	801615	WRAP-4-427	White	25.40	38.10	25.40	12.70	41.28	4.06	8.13	3600	R4300
▶	801616	WRAP-10-427	White	25.40	57.15	25.40	19.05	60.30	6.10	12.10	2500	R4300
▶	801617	WRAP-5-427	White	38.10	63.50	38.10	19.05	66.70	6.70	14.20	2200	R4300
▶	805030	WRAP-12-427	White	50.80	38.10	50.80	12.70	41.28	4.06	8.13	3600	R4300
▶	801618	WRAP-6-427	White	50.80	76.20	50.80	25.40	79.37	8.10	16.20	1900	R4300

## Nylon Cloth

Nylon cloth with permanent adhesive allows labelling in environments with heat, cold, oil and dirt. Ideal for wire and cable marking, electronic component marking, laboratory vial identification, and general labelling.

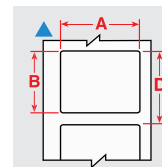


Diagram	Article No.	Order Reference	Colour	Label Width A (mm)	Label Height B (mm)	Min. Wire Diameter (mm)	Max. Wire Diameter (mm)	Vertical Repeat D (mm)	Labels per Roll	Printer Ribbon Series
<b>B-499: Metal Detectable Nylon / Nylon Cloth</b>										
▲	801619	WRAP-7-499	White	12.70	19.05	1.52	5.06	22.22	4500	R4300
▲	801620	WRAP-8-499	White	25.40	38.10	4.04	11.13	41.27	2800	R4300
▲	801621	WRAP-9-499	White	50.80	50.80	5.39	15.16	53.97	2100	R4300
▲	805031	WRAP-13-499	White	25.40	25.40	2.69	7.09	28.57	4100	R4300

## Polyimide

B-472 is specifically designed to self-extinguish and prevent flames from propagating. This material is ideal for wire and cable identification in extreme environments, particularly in the aerospace, defense and mass transit industries.

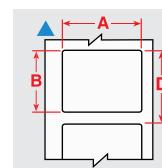


Diagram	Article No.	Order Reference	Colour	Label Width A (mm)	Label Height B (mm)	Min. Wire Diameter (mm)	Max. Wire Diameter (mm)	Vertical Repeat D (mm)	Labels per Roll	Printer Ribbon Series
<b>B-472: Polyimide</b>										
▲	129971	WRAP-1-472	White	12.70	19.05	3.30	8.13	22.23	6800	R2000, R4300, R6200
▲	129972	WRAP-6-472	White	50.80	76.20	3.30	8.13	79.38	1900	R2000, R4300, R6200

# Printer materials

The following part numbers are specially designed for use with the **BradyPrinter A5500 Flag Label Printer Applicator**.



## Paper/Polypropylene/Polyvinylfluoride Thermal Transfer Printable Labels

Regardless whether your cable and wire flag labelling needs to be permanent, of the highest quality, for general identification or for temporary work-in-progress labelling, with our extended label material options we have a solution.

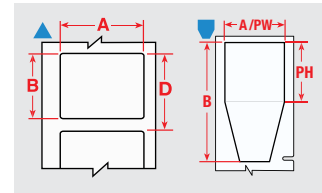
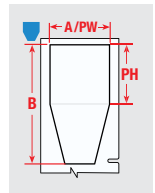


Diagram	Art. No.	Order Reference	Colour	Label Width A (mm)	Label Height B (mm)	Min. Wire Diameter (mm)	Max. Wire Diameter (mm)	Vertical Repeat D (mm)	Labels per Roll	Printer Ribbon Series
<b>B-483A: Polyester</b>										
▲	150697	A55-1-483	White	25.40	38.10	1.52	4.83	41.28	3600	R6000HF
▲	150698	A55-2-483	White	38.10	38.10	1.52	4.83	41.28	3600	R6000HF
▲	150699	A55-3-483	White	50.80	38.10	1.52	4.83	41.28	3600	R6000HF
▲	150700	A55-4-483	White	25.40	63.50	3.30	12.70	66.68	2200	R6000HF
▲	150701	A55-5-483	White	38.10	63.50	3.30	12.70	66.68	2200	R6000HF
▲	150702	A55-6-483	White	50.80	63.50	3.30	12.70	66.68	2200	R6000HF
▲	150703	A55-7-483	White	50.80	76.20	12.70	15.24	79.38	1900	R6000HF
<b>B-424: Paper</b>										
▲	151825	A55-1-424	White	25.40	38.10	1.52	4.83	41.28	3800	R4300, R6100
▲	151826	A55-2-424	White	38.10	38.10	1.52	4.83	41.28	3800	R4300, R6100
▲	151827	A55-3-424	White	50.80	38.10	1.52	4.83	41.28	3800	R4300, R6100
▲	151828	A55-4-424	White	25.40	63.50	3.30	8.13	66.68	2400	R4300, R6100
▲	151829	A55-5-424	White	38.10	63.50	3.30	4.83	66.68	2400	R4300, R6100
▲	151830	A55-6-424	White	50.80	63.50	3.30	9.65	66.68	2400	R4300, R6100
▲	151831	A55-7-424	White	50.80	76.20	8.13	15.24	79.38	2000	R4300, R6100
▲	151832	A55-11-424	White	25.40	50.80	1.52	8.13	53.98	3000	R4300, R6100
▲	151833	A55-12-424	White	25.40	76.20	8.13	15.24	79.38	2000	R4300, R6100
▲	151834	A55-13-424	White	50.80	50.80	1.52	6.35	53.98	3000	R4300, R6100
<b>B-425A: Polypropylene</b>										
▲	151835	A55-1-425	White	25.40	38.10	1.52	4.83	41.28	3300	R4300
▲	151836	A55-2-425	White	38.10	38.10	1.52	.51	41.28	3300	R4300
▲	151837	A55-3-425	White	50.80	38.10	1.52	4.83	41.28	3300	R4300
▲	151838	A55-4-425	White	25.40	63.50	3.30	9.65	66.68	2000	R4300
▲	151839	A55-5-425	White	38.10	63.50	3.30	8.13	66.68	2000	R4300
▲	151840	A55-6-425	White	50.80	63.50	3.30	8.13	66.68	2000	R4300
▲	151841	A55-7-425	White	50.80	76.20	8.13	12.70	79.38	1700	R4300
▲	151842	A55-11-425	White	25.40	50.80	1.52	6.35	53.98	2500	R4300
▲	151843	A55-12-425	White	25.40	76.20	8.13	15.24	79.38	1700	R4300
▲	151844	A55-13-425	White	50.80	50.80	1.52	8.13	53.98	2500	R4300
<b>B-437: Polyvinylfluoride</b>										
▲	151845	A55-1-437	White	25.40	38.10	1.52	4.83	41.28	3800	R4300
▲	151846	A55-2-437	White	38.10	38.10	1.52	4.83	41.28	3800	R4300
▲	151847	A55-3-437	White	50.80	38.10	1.52	4.83	41.28	3800	R4300
▲	151848	A55-4-437	White	25.40	63.50	3.30	12.70	66.68	2400	R4300
▲	151849	A55-5-437	White	38.10	63.50	3.30	9.65	66.68	2400	R4300
▲	151850	A55-6-437	White	50.80	63.50	3.30	9.65	66.68	2400	R4300
▲	151851	A55-7-437	White	50.80	76.20	8.13	15.24	79.38	2000	R4300
▲	151852	A55-11-437	White	25.40	50.80	1.52	6.35	53.98	3000	R4300
▲	151853	A55-12-437	White	25.40	76.20	8.13	15.24	79.38	2000	R4300
▲	151854	A55-13-437	White	50.80	50.80	1.52	8.13	53.98	3000	R4300
<b>B-483A: Polyester</b>										
▲	151865	A55-10-483	White	12.70	38.10	1.52	4.83	41.28	3600	R6000HF
▲	151866	A55-11-483	White	25.40	50.80	1.52	6.35	53.98	2800	R6000HF
▲	151867	A55-12-483	White	25.40	76.20	8.13	15.24	79.38	1900	R6000HF
▲	151868	A55-13-483	White	50.80	50.80	1.52	6.35	53.98	2800	R6000HF
▲	151869	A55-14-483	White	19.05	38.10	1.52	4.83	41.28	3600	R6000HF
■	176978	A55-15-483	White	25.40	44.45	1.52	4.83	47.62	3100	R6000HF
■	176979	A55-16-483	White	38.10	44.45	1.52	4.83	47.62	3100	R6000HF
■	176980	A55-17-483	White	50.80	44.45	1.52	4.83	47.62	3100	R6000HF
■	176981	A55-18-483	White	25.40	63.50	3.30	12.70	66.68	2200	R6000HF
■	176982	A55-19-483	White	38.10	63.50	3.30	12.70	66.68	2200	R6000HF
■	176983	A55-20-483	White	50.80	63.50	3.30	12.70	66.68	2200	R6000HF



# Printer materials (Continued)



The following part numbers are specially designed for use with the **BradyPrinter A5500 Flag Label Printer Applicator**.

Diagram	Art. No.	Order Reference	Colour	Label Width A (mm)	Label Height B (mm)	Min. Wire Diameter (mm)	Max. Wire Diameter (mm)	Vertical Repeat D (mm)	Labels per Roll	Printer Ribbon Series
	176984	A55-21-483	White	50.80	76.20	12.70	15.24	79.38	1900	R6000HF
	176985	A55-22-483	White	12.70	44.45	1.52	4.83	47.62	3100	R6000HF
	176986	A55-23-483	White	25.40	50.80	1.52	6.35	53.98	2800	R6000HF
	176987	A55-24-483	White	25.40	76.20	8.13	15.24	79.38	1900	R6000HF
	176988	A55-25-483	White	50.80	50.80	1.52	6.35	53.98	2800	R6000HF
	176989	A55-26-483	White	19.05	44.45	1.52	4.83	47.62	3100	R6000HF
	176997	A55-27-483	White	48.26	50.80	1.52	6.35	53.98	2800	R6000HF

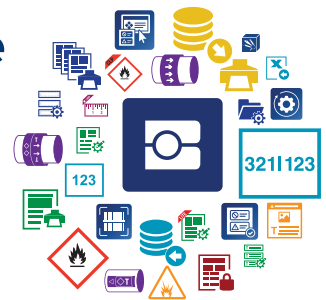
## Ribbons

Article No.	Order Reference	Width (mm)	Length B (m)	Description
150706	SSR4302	60.00	300.00	Black 4300 Series Thermal Transfer Printer Ribbon for BradyPrinter A5500
150707	SSR4306	40.00	300.00	Black 4300 Series Thermal Transfer Printer Ribbon for BradyPrinter A5500
150709	SSR6002	60.00	300.00	Black 6000 Series Halogen Free Thermal Transfer Printer Ribbon for BradyPrinter A5500
150710	SSR6006	40.00	300.00	Black 6000 Series Halogen Free Thermal Transfer Printer Ribbon for BradyPrinter A5500
151810	SSR6102	60.00	300.00	Black 6100 Series Thermal Transfer Printer Ribbon for BradyPrinter A5500

## Brady Workstation Labelling Software

Get everything you need to create the right label fast.

Brady Workstation offers professional, intuitive apps to design quality labels and safety signs. Label design becomes easier, faster and quickly adaptable to new label norms thanks to centralised updates.



### Brady Workstation Design & Print Essentials

Design & Print Essentials includes everything you need to create and print basic labels, signs, and templates. Design from scratch or utilize tools such as premade layouts and data import functionality to save time.

**Brady Workstation Design & Print Essentials is included with every printer.**

#### ▶ Try it today!

Discover Brady Workstation at [www.bradyeurope.com/workstation](http://www.bradyeurope.com/workstation) or download at [workstation.bradyid.com](http://workstation.bradyid.com)



### Brady Workstation Design & Print Pro

Introducing the Design Print Pro, your all-in-one solution for creating safety, facility, product, wire, and laboratory labels and signs. Take advantage of purpose-built design tools to simplify common labeling needs.

Effortlessly design and print custom safety signs, facility labels, and pipemarkers to enhance workplace safety. Ensure lab samples and equipment are clearly labeled with labels for vials, tubes, slides, and more.

Simplify labeling, maintain compliance, and keep your facility organized - all with one comprehensive suite.



**AUTOMATED PRINT AND APPLY**



**SPECIALISED HIGH QUALITY IDENTIFICATION**



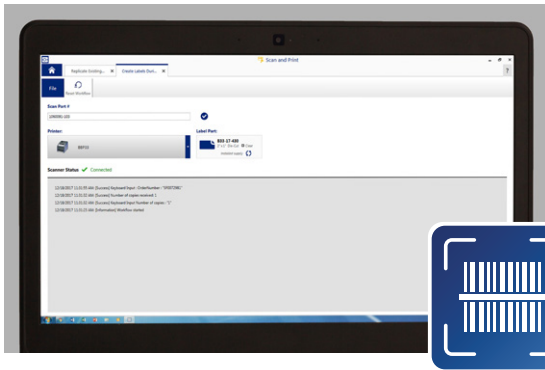
**SOFTWARE**



**SUPPORT AND SERVICES**

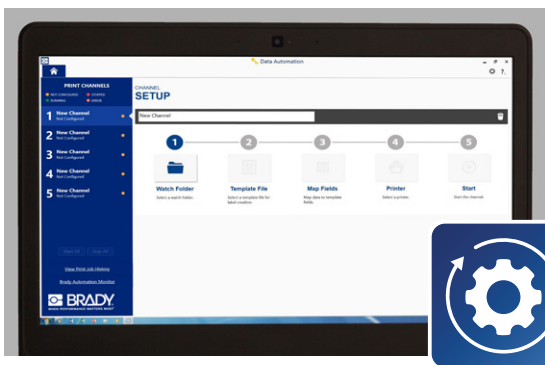
# Brady Workstation Labelling Software

Get everything you need to create the right label fast.



## Automation Suite

Save time and labour by fully automating your label printing. These apps make it easy to set up templates and import data, to automate your label creation process and to make it error-free.



## Scan and Print Suite

Quickly populate data in label templates with these apps. Just use a barcode scanner, keyboard or custom script. Ideal for labelling off-of-work orders and re-labelling supplied parts for product assembly.



## Easily Connect to Your Printer

Brady Workstation works seamlessly with a range of Brady printers. Simply connect a Brady printer to an internet connected computer to access and print your Brady Workstation label templates and functionalities. Brady's high-end label printers also offer bi-directional communication with Brady Workstation and will inform users if they have to switch label materials to print specific label designs.



## Try it today!

Discover more on

[www.bradyeurope.com/bradyworkstation](http://www.bradyeurope.com/bradyworkstation)

Click or scan the QR-code



**AUTOMATED PRINT  
AND APPLY**



**SPECIALISED HIGH  
QUALITY IDENTIFICATION**



**SOFTWARE**



**SUPPORT AND  
SERVICES**

# Real support

We understand how important label printers can be. We appreciate the vital role label printers play in enabling track and trace capabilities, quality control, fraud prevention, enhanced safety, and operational efficiency. That is why we will deliver a solution to any technical issue, as fast as possible.



**No matter which label printer you are using: give us a call.**

☎ **0208 865 0438**

✉ **tseurope@bradycorp.com**

## Easy to reach, anywhere

If you have a problem with a label printer, just call Brady. Our highly experienced Technical Excellence Centre Engineers are standby to solve your issue. Via phone, via email, or in person at your premises. Offer any technical label printer challenge you are facing, and you will get a first response within 24 hours, in your own language. Because we are here to reduce complexity, not add to it.

## Customer focused support

We deliver complete solutions and complete support, tailored to the needs of your workplace. If fast response times and troubleshooting are what you need, that's what we will deliver. If you want to include professional label printer installation and programming, training, preventive maintenance, loaner printers or even standby loaners at your premises, that's what we will enable. Give us a call, tell us about your needs, and we will suggest an ideal service level.

## Straight from the manufacturer

Our experienced engineers know every component of your Brady printer, from printhead, drivers and software, down to the smallest rivet. They will solve your issue, no matter how unique it might be. Because that is what happens when you have direct manufacturer support.



**Review our service levels:**



**AUTOMATED PRINT AND APPLY**



**SPECIALISED HIGH QUALITY IDENTIFICATION**



**SOFTWARE**



**SUPPORT AND SERVICES**



**Belgium & Luxembourg**

+32 (0) 52 45 78 11  
benelux@bradycorp.com

**Czech Republic**

+420 776 302 229  
czechrepublic@bradycorp.com

**Denmark**

+45 66 14 44 00  
denmark@bradycorp.com

**France**

+33 (0) 3 20 76 94 48  
france@bradycorp.com

**Germany, Austria & Switzerland**

+49 (0) 6103 7598 660  
germany@bradycorp.com

**Hungary**

+36 23 500 275  
hungary@bradycorp.com

**Italy**

+39 02 26 00 00 22  
italy@bradycorp.com

**Netherlands**

+31 (0)70 323 62 98  
benelux@bradycorp.com

**Norway**

+47 70 13 40 00  
norway@bradycorp.com

**Poland**

+48 22 104 6262  
poland@bradycorp.com

**Qatar, Saudi Arabia & UAE**

+971 4881 2524  
me@bradycorp.com

**Slovakia**

+421 902 939 406  
slovakia@bradycorp.com

**South Africa**

+27 11 704 3295  
africa@bradycorp.com

**Spain & Portugal**

+34 900 902 993  
spain@bradycorp.com  
portugal@bradycorp.com

**Sweden, Finland, Estonia,  
Latvia, Lithuania**

+46 (0) 8 590 057 30  
sweden@bradycorp.com

**Turkey**

+90 212 264 02 20  
turkey@bradycorp.com

**UK & Ireland**

+44 (0) 1295 228 288  
uk@bradycorp.com

We make products that make the world a safer and smarter place. From the depths of the ocean to outer space, from the factory floor to the delivery room - **we're just about everywhere you look.**



To help minimise our impact on the environment, Brady limits its number of reprints.

Updated versions are always available for download on [bradyeurope.com/downloads](http://bradyeurope.com/downloads).



Search for: EUR-M-953-EN



Y4611898

Your distributor