

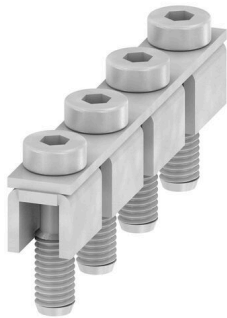
**WQV 50N/4****Weidmüller Interface GmbH & Co. KG**

Klingenbergstraße 26

D-32758 Detmold

Germany

www.weidmueller.com

**Product image**

The distribution or multiplication of a potential to adjoining terminal blocks is realized via a cross-connection. Additional wiring effort can be easily avoided. Even if the poles are broken out, contact reliability in the terminal blocks is still ensured. Our portfolio offers pluggable and screwable cross-connection systems for modular terminal blocks.

**General ordering data**

Version	Cross-connector (terminal), when screwed in, Silver grey, 150 A, Number of poles: 4, Pitch in mm (P): 18.50, Insulated: No, Width: 9.5 mm
Order No.	<a href="#">1834080000</a>
Type	WQV 50N/4
GTIN (EAN)	4032248379873
Qty.	5 items

## WQV 50N/4

Weidmüller Interface GmbH &amp; Co. KG

Klingenbergstraße 26

D-32758 Detmold

Germany

www.weidmueller.com

## Technical data

## Approvals

ROHS Conform

## Dimensions and weights

Depth	17.5 mm	Depth (inches)	0.689 inch
Height	65.5 mm	Height (inches)	2.5787 inch
Width	9.5 mm	Width (inches)	0.374 inch
Net weight	64.37 g		

## Temperatures

Storage temperature -25 °C...55 °C Ambient temperature -5 °C...40 °C

## Environmental Product Compliance

RoHS Compliance Status	Compliant without exemption
REACH SVHC	No SVHC above 0.1 wt%

## Material data

Basic material tinned copper Colour Silver grey

## System specifications

Version For the terminals

## Additional technical data

Type of fixing	when screwed in	Installation advice	Direct mounting
Explosion-tested version	No		

## Dimensions

Pitch in mm (P) 18.50 mm

## General

Number of poles 4 Installation advice Direct mounting

## Rating data

Rated voltage 400 V Nominal current 150 A

## Classifications

ETIM 8.0	EC000489	ETIM 9.0	EC000489
ETIM 10.0	EC000489	ECLASS 14.0	27-25-03-03
ECLASS 15.0	27-25-03-03		

## WQV 50N/4

**Weidmüller Interface GmbH & Co. KG**  
Klingenbergstraße 26  
D-32758 Detmold  
Germany

[www.weidmueller.com](http://www.weidmueller.com)

## Accessories

### auxillary connection



The additional connection enables a separate voltage tap. This can be used, for example, for the emergency power supply before the main switch or simply as an additional connection within the application.

### General ordering data

Type	VH 27.4/8/6.4	Version	
Order No.	<a href="#">1967090000</a>	W-Series, Spacer sleeve	
GTIN (EAN)	4032248738700		
Qty.	5 ST		