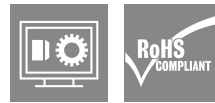
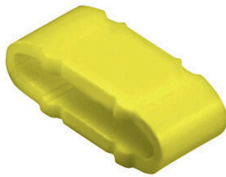


CLI M 2-4 GE/SW L MP

Weidmüller Interface GmbH & Co. KG
Klingenbergstraße 26
D-32758 Detmold
Germany

www.weidmueller.com



Similar to illustration

CLI M identification markers are slid onto CLI MH carrier strips and secured by means of cable ties. The system is particularly suitable for large conductor and cable cross-sections. Advantages:

- Combination marker for cable and pipe markers
- One size for all diameters above 16 mm²
- Unrestricted combination options
- Closed, permanently attached markers
- Very good legibility

General ordering data

Version	CableLine, Conductor and cable markers, 10 - 317 mm, 4 x 11.3 mm, yellow
Order No.	1733651659
Type	CLI M 2-4 GE/SW L MP
GTIN (EAN)	4008190398163
Qty.	100 items

CLI M 2-4 GE/SW L MP

Weidmüller Interface GmbH & Co. KG
Klingenbergstraße 26
D-32758 Detmold
Germany

www.weidmueller.com

Technical data

Approvals

ROHS	Conform
------	---------

Dimensions and weights

Depth	3 mm	Depth (inches)	0.1181 inch
Height	4 mm	Height (inches)	0.1575 inch
Width	11.3 mm	Width (inches)	0.4449 inch
Net weight	0.12 g		

Temperatures

Operating temperature range	-30...80 °C
-----------------------------	-------------

Environmental Product Compliance

RoHS Compliance Status	Compliant without exemption
REACH SVHC	No SVHC above 0.1 wt%

General data

Material colour according to resistance code	4	
Orientation of print	horizontal	
Type of printing	Standard	
Printing method	hot-embossing	
Version	MultiPack	
Width	11.3 mm	
UL 94 flammability rating	V-0	
Operating temperature range, max.	80 °C	
Operating temperature range, min.	-30 °C	
Colour	yellow	
Halogen	Yes	
Basic material	PVC, soft, without Cadmium	
Colour of printing	black	
Printed characters	Upper-case letters	
Number of markers per packaging unit	Form of supply	Component part
Recommended industries	Process, Machinery	
Number of markers per combination	1 Component part = Conductor and cable markers	
Operating temperature range	-30...80 °C	
Imprint	L	

Conductor and cable markers

Halogen	Yes	Conductor cross-section, max.	500 mm ²
Conductor cross-section, min.	16 mm ²	Conductor O.D., max.	317 mm
Conductor O.D., min.	10 mm	Conductor O.D.	10 - 317 mm
Cross-section for connected wire	16 - 500 mm ²		

Classifications

ETIM 8.0	EC001530	ETIM 9.0	EC001530
ETIM 10.0	EC001530	ECLASS 14.0	27-28-11-02
ECLASS 15.0	27-28-11-02		



Similar to illustration

CLI M 2-4 GE/SW L MP

Weidmüller Interface GmbH & Co. KG
 Klingenbergstraße 26
 D-32758 Detmold
 Germany

www.weidmueller.com

Accessories

Holders



CLI M identification markers are slid onto CLI MH carrier strips and secured by means of cable ties. The system is particularly suitable for large conductor and cable cross-sections. Advantages:

- Combination marker for cable and pipe markers
- One size for all diameters above 16 mm²
- Unrestricted combination options
- Closed, permanently attached markers
- Very good legibility

General ordering data

Type	CLI MH 110 HSTR	Version
Order No.	0189400000	CableLine, Accessories, 10 - 317 mm, 110 x 11.3 mm, black
GTIN (EAN)	4008190144784	
Qty.	100 ST	
Type	CLI MH 70 HSTR	Version
Order No.	0524400000	CableLine, Accessories, 10 - 317 mm, 70 x 11.3 mm, black
GTIN (EAN)	4008190075057	
Qty.	100 ST	