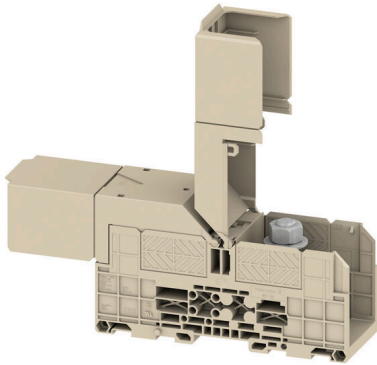


**WFF 185/AH****Weidmüller Interface GmbH & Co. KG**Klingenbergstraße 26  
D-32758 Detmold  
Germany

www.weidmueller.com



To feed through power, signal, and data is the classical requirement in electrical engineering and panel building. The insulating material, the connection system and the design of the terminal blocks are the differentiating features. A feed-through terminal block is suitable for joining and/or connecting one or more conductors. They could have one or more connection levels that are on the same potential or insulated against one another.

**General ordering data**

Version	Bolt-type screw terminals, Feed-through terminal, Rated cross-section: 185 mm <sup>2</sup> , Threaded stud connection
Order No.	<a href="#">1029600000</a>
Type	WFF 185/AH
GTIN (EAN)	4008190106188
Qty.	2 items

## Technical data

## Approvals

Approvals



ROHS	Conform
UL File Number Search	<a href="#">UL Website</a>
Certificate No. (UR)	E60693
Certificate No. (cURusEX)	E184763

## Dimensions and weights

Depth	89.5 mm	Depth (inches)	3.5236 inch
Depth including DIN rail	98 mm	Height	287 mm
Height (inches)	11.2992 inch	Width	55 mm
Width (inches)	2.1654 inch	Net weight	466.43 g

## Temperatures

Storage temperature	-25 °C...55 °C	Ambient temperature	-5 °C...40 °C
Continuous operating temp., min.	-50 °C	Continuous operating temp., max.	120 °C

## Environmental Product Compliance

RoHS Compliance Status	Compliant without exemption
REACH SVHC	No SVHC above 0.1 wt%

## Material data

Basic material	Wemid	Colour	dark beige
UL 94 flammability rating	V-0		

## Rating data IECEx/ATEX

Marking EN 60079-7	Ex eb II C Gb	Ex 2014/34/EU label	II 2 G D
--------------------	---------------	---------------------	----------

## System specifications

End cover plate required	No	Number of potentials	1
Number of levels	1	Number of clamping points per level	2
Levels cross-connected internally	No	PE connection	No
Mounting rail	TS 35		

## Additional technical data

Open sides	closed	Number of similar terminals	1
Explosion-tested version	Yes	Type of mounting	Snap-on

## CSA rating data

Wire cross section max. (CSA)	500 kcmil	Voltage size C (CSA)	600 V
Current size C (CSA)	360 A	Certificate No. (CSA)	200039-1244019

## WFF 185/AH

**Weidmüller Interface GmbH & Co. KG**

Klingenbergstraße 26  
D-32758 Detmold  
Germany

www.weidmueller.com

## Technical data

Voltage size D (CSA)	600 V	Current size D (CSA)	5 A
Wire cross section min. (CSA)	8 AWG		

### Conductors for clamping (rated connection)

Cable lug to DIN 46234	10...240 mm <sup>2</sup>	Cable lug to DIN 46235	25...240 mm <sup>2</sup>
Wire connection cross section AWG, max.	kcmil 500	Connection direction	on side
Tightening torque, max.	31 Nm	Tightening torque, min.	14 Nm
Type of connection	Threaded stud connection	Number of connections	2
Clamping range, max.	240 mm <sup>2</sup>	Clamping range, min.	10 mm <sup>2</sup>
Wire connection cross section AWG, min.	AWG 6	Wire connection cross-section, finely stranded with wire-end ferrules DIN 46228/4, min.	10 mm <sup>2</sup>
Wire connection cross-section, finely stranded with wire-end ferrules DIN 46228/1, min.	10 mm <sup>2</sup>	Wire connection cross section, finely stranded, max.	240 mm <sup>2</sup>
Wire connection cross section, finely stranded, min.	10 mm <sup>2</sup>	Connection cross-section, stranded, max.	240 mm <sup>2</sup>
Connection cross-section, stranded, min.	10 mm <sup>2</sup>	Stud size for spade connection	M 12
Wire connection cross-section, solid core, max.	240 mm <sup>2</sup>	Wire connection cross-section, solid core, min.	10 mm <sup>2</sup>
Connection cross-section, finely stranded, min.	10 mm <sup>2</sup>	2 x cable lugs DIN 46 235	25...185 mm <sup>2</sup>
2 x cable lugs DIN 46 234	10...185 mm <sup>2</sup>		

### General

Wire connection cross section AWG, max.	kcmil 500	Wire connection cross section AWG, min.	AWG 6
Standards	IEC 60947-7-1	Mounting rail	TS 35

### Rating data

Rated cross-section	185 mm <sup>2</sup>	Rated voltage	1000 V
Rated DC voltage	1500 V	Nominal current	353 A
Current at maximum wires	415 A	Standards	IEC 60947-7-1
Volume resistance according to IEC 60947-7-x	0.09 mΩ	Rated impulse withstand voltage	8 kV
Power loss in accordance with IEC 60947-7-x	11.30 W	Pollution severity	3

### UL rating data

Conductor size Factory wiring max. (UR)	500 AWG	Current size C (UR)	380 A
Voltage size C (UR)	1000 V	Conductor size Factory wiring min. (UR)	8 AWG
Certificate No. (UR)	E60693	Conductor size Field wiring min. (UR)	8 AWG
Conductor size Field wiring max. (UR)	500 AWG		

### Classifications

ETIM 8.0	EC000897	ETIM 9.0	EC000897
ETIM 10.0	EC000897	ECLASS 14.0	27-25-01-01
ECLASS 15.0	27-25-01-01		

**Drawings**



## WFF 185/AH

Weidmüller Interface GmbH &amp; Co. KG

Klingenbergstraße 26

D-32758 Detmold

Germany

www.weidmueller.com

## Accessories

## Cross-connections

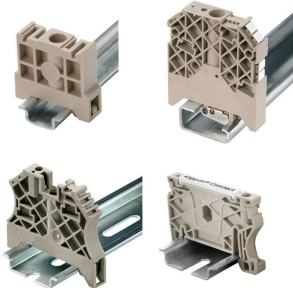


The distribution or multiplication of a potential to adjoining terminal blocks is realized via a cross-connection. Additional wiring effort can be easily avoided. Even if the poles are broken out, contact reliability in the terminal blocks is still ensured. Our portfolio offers pluggable and screwable cross-connection systems for modular terminal blocks.

## General ordering data

Type	WQL 2 WFF185	Version
Order No.	<a href="#">1065200000</a>	Bolt-type screw terminals, Cross-connector, Number of poles: 2
GTIN (EAN)	4008190044855	
Qty.	5 ST	
Type	WQL 3 WFF185	Version
Order No.	<a href="#">1065700000</a>	Bolt-type screw terminals, Cross-connector, Number of poles: 3
GTIN (EAN)	4008190140885	
Qty.	5 ST	

## End bracket



Weidmüller's range of products includes end brackets that guarantee a permanent, reliable mounting on the terminal rail and prevent sliding. Versions with and without screws are available. The end brackets include marking options, also for group markers, and also a test plug holder.

## General ordering data

Type	WEW 35/1	Version
Order No.	<a href="#">1059000000</a>	End bracket, dark beige, TS 35, V-2, Wemid, Width: 12 mm, 100 °C
GTIN (EAN)	4008190172282	
Qty.	50 ST	

## Additional connection



The additional connection enables a separate voltage tap. This can be used, for example, for the emergency power supply before the main switch or simply as an additional connection within the application.

## WFF 185/AH

**Weidmüller Interface GmbH & Co. KG**  
 Klingenbergstraße 26  
 D-32758 Detmold  
 Germany

www.weidmueller.com

## Accessories

### General ordering data

Type	WZAF 185	Version	
Order No.	<a href="#">1066400000</a>	Auxiliary connection (terminal)	
GTIN (EAN)	4008190031985		
Qty.	10 ST		

### Protection against contact

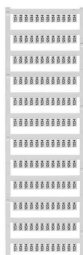


Our systems for touch protection ensure greater safety in your cabinet. They provide protection against electric shock caused by accidental contact with live parts due to operation or faults.

### General ordering data

Type	WAH 185/300 BE	Version	
Order No.	<a href="#">1064760000</a>	Bolt-type screw terminals, Hood, beige, 54 mm	
GTIN (EAN)	4008190108267		
Qty.	10 ST		
Type	WAH 185/300 BL	Version	
Order No.	<a href="#">1064780000</a>	Bolt-type screw terminals, Hood, blue, 54 mm	
GTIN (EAN)	4008190103200		
Qty.	10 ST		

### Custom printing



WS markers are the perfect match for the W-series connectors. Thanks to their system compatibility, the WS tags can also be used with the I-series and the Z-series. The large marking surfaces do not only permit long character strings but also multi-line text. WS markers are ideal for labels with long, customised character strings. Thanks to the proven MultiCard format, printing with PrintJet CONNECT oder/or Plotter is possible.

- Can be fitted in strips or individually
- Markers in proven MultiCard format

For custom printing: Please send us a file of our labeling software M-Print PRO or M-Print PRO Online (without installation) for your labeling specifications.

### General ordering data

Type	WS 12/6.5 MC SDR	Version	
Order No.	<a href="#">1609930000</a>	WS, Terminal marker, 12 x 6.5 mm, Pitch in mm (P): 6.50	
GTIN (EAN)	4008190456665	Weidmueller, Allen-Bradley, To customer specification	
Qty.	108 ST		

## WFF 185/AH

Weidmüller Interface GmbH &amp; Co. KG

Klingenbergstraße 26

D-32758 Detmold

Germany

## Accessories

www.weidmueller.com

## Blank



WS markers are the perfect match for the W-series connectors. Thanks to their system compatibility, the WS tags can also be used with the I-series and the Z-series. The large marking surfaces do not only permit long character strings but also multi-line text. WS markers are ideal for labels with long, customised character strings. Thanks to the proven MultiCard format, printing with PrintJet CONNECT oder/or Plotter is possible.

- Can be fitted in strips or individually
- Markers in proven MultiCard format

For custom printing: Please send us a file of our labeling software M-Print PRO or M-Print PRO Online (without installation) for your labeling specifications.

## General ordering data

Type	WS 12/6.5 MC NE WS	Version
Order No.	<a href="#">1609920000</a>	WS, Terminal marker, 12 x 6.5 mm, Pitch in mm (P): 6.50
GTIN (EAN)	4008190203511	Weidmueller, Allen-Bradley, white
Qty.	540 ST	
Type	DEK 5/5 MC NE WS	Version
Order No.	<a href="#">1609801044</a>	Dekafix, Terminal marker, 5 x 5 mm, Pitch in mm (P): 5.00
GTIN (EAN)	4008190397111	Weidmueller, white
Qty.	1000 ST	

## Marker holder



The marker holder offer the possibility of additional mounting of standard markers with a pitch of 5 or 5.1 mm. The angled holders can be optionally snapped together and could be mounted in all standard marking channels of the Klippon® Connect modular terminal blocks. Fitting marker types could be found under the respective accessories of the designation marking holder.

## General ordering data

Type	BZT 1 WS 10/5	Version
Order No.	<a href="#">1805490000</a>	Accessories, Marker holder
GTIN (EAN)	4032248270231	
Qty.	100 ST	
Type	BZT 1 ZA WS 10/5	Version
Order No.	<a href="#">1805520000</a>	Accessories, Marker holder
GTIN (EAN)	4032248270248	
Qty.	100 ST	

## WFF 185/AH

Weidmüller Interface GmbH &amp; Co. KG

Klingenbergstraße 26

D-32758 Detmold

Germany

www.weidmueller.com

## Accessories

## Testadapter and testsockets

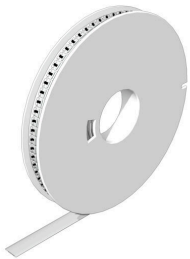


Test adapters and test plugs are used for the electrical connection between terminal blocks and the test equipment. In this way, an electrical contact can be established in the wired state and measurements can be done easily.

## General ordering data

Type	PS 4 F.STB 4	Version	
Order No.	<a href="#">0299600000</a>	Test adapter (terminal), 230 V	
GTIN (EAN)	4008190074043		
Qty.	20 ST		

## WS 12/6.5



## WS/ DEK

MultiMark terminal markers use an innovative composite material made from two components. The hard base contour of the marker snaps securely into the connector. The elastic surface finish makes the marker easy to mount. This specially punched material enables the strips to be stretched to accommodate the slight variations in spacing that tend to add up, especially with long terminal blocks. Another advantage: the excellent printability of the surface material guarantees durable and wear-resistant labelling. A print resolution of 300 dpi also produces a very legible script.

Your benefits with MultiMark

- Firm hold and durable printing
- Continuous strips save installation time
- Easy mounting thanks to an innovative composite material
- Large label field for optimal legibility
- High flexibility thanks to manufacturer independence

## General ordering data

Type	WS 12/6.5 MM WS	Version	
Order No.	<a href="#">2619930000</a>	WS, Terminal marker, 12 x 6.5 mm, Weidmueller, white	
GTIN (EAN)	4050118626155		
Qty.	600 ST		