

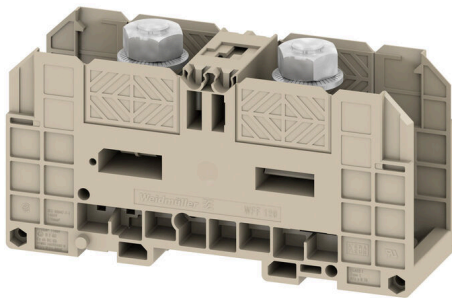
**WFF 120****Weidmüller Interface GmbH & Co. KG**

Klingenbergstraße 26

D-32758 Detmold

Germany

www.weidmueller.com

**Product image**

To feed through power, signal, and data is the classical requirement in electrical engineering and panel building. The insulating material, the connection system and the design of the terminal blocks are the differentiating features. A feed-through terminal block is suitable for joining and/or connecting one or more conductors. They could have one or more connection levels that are on the same potential or insulated against one another.

**General ordering data**

Version	Bolt-type screw terminals, Feed-through terminal, Rated cross-section: 120 mm <sup>2</sup> , Threaded stud connection, Direct mounting
Order No.	<a href="#">1028500000</a>
Type	WFF 120
GTIN (EAN)	4008190004866
Qty.	5 items

## WFF 120

**Weidmüller Interface GmbH & Co. KG**  
 Klingenbergstraße 26  
 D-32758 Detmold  
 Germany

www.weidmueller.com

## Technical data

### Approvals

Approvals



ROHS	Conform
UL File Number Search	<a href="#">UL Website</a>
Certificate No. (UR)	E60693
Certificate No. (cURusEX)	E184763

### Dimensions and weights

Depth	72 mm	Depth (inches)	2.8346 inch
Depth including DIN rail	80.5 mm	Height	132 mm
Height (inches)	5.1968 inch	Width	42 mm
Width (inches)	1.6535 inch	Net weight	246.66 g

### Temperatures

Storage temperature	-25 °C...55 °C	Ambient temperature	-5 °C...40 °C
Continuous operating temp., min.	-50 °C	Continuous operating temp., max.	120 °C

### Environmental Product Compliance

RoHS Compliance Status	Compliant without exemption
REACH SVHC	No SVHC above 0.1 wt%

### Material data

Basic material	Wemid	Colour	dark beige
UL 94 flammability rating	V-0		

### Rating data IECEX/ATEX

Certificate No. (IECEX)	IECEXULD15.0004U	Max. voltage (IECEX)	1100 V
Current (IECEX)	269 A	Wire cross section max. (IECEX)	120 mm <sup>2</sup>
Marking EN 60079-7	Ex eb II C Gb	Ex 2014/34/EU label	II 2 G D

### System specifications

End cover plate required	No	Number of potentials	1
Number of levels	1	Number of clamping points per level	2
Levels cross-connected internally	No	PE connection	No
Mounting rail	TS 35		

### Additional technical data

Open sides	closed	Number of similar terminals	1
Installation advice	Direct mounting	Explosion-tested version	Yes
Type of mounting	Snap-on		

## WFF 120

**Weidmüller Interface GmbH & Co. KG**

Klingenbergstraße 26  
D-32758 Detmold  
Germany

www.weidmueller.com

## Technical data

### CSA rating data

Wire cross section max. (CSA)	250 kcmil	Voltage size C (CSA)	600 V
Current size C (CSA)	310 A	Certificate No. (CSA)	200039-1244019
Wire cross section min. (CSA)	10 AWG		

### Conductors for clamping (rated connection)

Cable lug to DIN 46234	6...150 mm <sup>2</sup>	Cable lug to DIN 46235	16...150 mm <sup>2</sup>
Wire connection cross section AWG, max.	kcmil 250	Connection direction	on side
Tightening torque, max.	20 Nm	Tightening torque, min.	10 Nm
Type of connection	Threaded stud connection	Number of connections	2
Clamping range, max.	150 mm <sup>2</sup>	Clamping range, min.	6 mm <sup>2</sup>
Wire connection cross section AWG, min.	AWG 8	Wire connection cross-section, finely stranded with wire-end ferrules DIN 46228/4, min.	6 mm <sup>2</sup>
Wire connection cross-section, finely stranded with wire-end ferrules DIN 46228/1, min.	6 mm <sup>2</sup>	Wire connection cross section, finely stranded, max.	150 mm <sup>2</sup>
Wire connection cross section, finely stranded, min.	6 mm <sup>2</sup>	Connection cross-section, stranded, max.	150 mm <sup>2</sup>
Connection cross-section, stranded, min.	6 mm <sup>2</sup>	Stud size for spade connection	M 10
Wire connection cross-section, solid core, max.	150 mm <sup>2</sup>	Wire connection cross-section, solid core, min.	6 mm <sup>2</sup>
Connection cross-section, finely stranded, min.	6 mm <sup>2</sup>	2 x cable lugs DIN 46 235	16...120 mm <sup>2</sup>
2 x cable lugs DIN 46 234	6 to 120 mm <sup>2</sup>		

### General

Wire connection cross section AWG, max.	kcmil 250	Installation advice	Direct mounting
Wire connection cross section AWG, min.	AWG 8	Standards	IEC 60947-7-1
Mounting rail	TS 35		

### Rating data

Rated cross-section	120 mm <sup>2</sup>	Rated voltage	1000 V
Rated DC voltage	1500 V	Nominal current	269 A
Current at maximum wires	309 A	Standards	IEC 60947-7-1
Volume resistance according to IEC 60947-7-x	0.12 mΩ	Rated impulse withstand voltage	8 kV
Power loss in accordance with IEC 60947-7-x	8.61 W	Pollution severity	3

### UL rating data

Conductor size Factory wiring max. (UR)	250 kcmil	Current size C (UR)	310 A
Voltage size C (UR)	1000 V	Conductor size Factory wiring min. (UR)	10 AWG
Certificate No. (UR)	E60693	Conductor size Field wiring min. (UR)	10 AWG
Conductor size Field wiring max. (UR)	250 kcmil		

### Classifications

ETIM 8.0	EC000897	ETIM 9.0	EC000897
ETIM 10.0	EC000897	ECLASS 14.0	27-25-01-01
ECLASS 15.0	27-25-01-01		

**Drawings**



## WFF 120

**Weidmüller Interface GmbH & Co. KG**  
 Klingenbergstraße 26  
 D-32758 Detmold  
 Germany

www.weidmueller.com

## Accessories

### Cross-connections



The distribution or multiplication of a potential to adjoining terminal blocks is realized via a cross-connection. Additional wiring effort can be easily avoided. Even if the poles are broken out, contact reliability in the terminal blocks is still ensured. Our portfolio offers pluggable and screwable cross-connection systems for modular terminal blocks.

### General ordering data

Type	WQL 2 WFF 120	Version
Order No.	<a href="#">1065100000</a>	Bolt-type screw terminals, Cross-connector, Number of poles: 2
GTIN (EAN)	4008190133771	
Qty.	5 ST	
Type	WQL 3 WFF 120	Version
Order No.	<a href="#">1065600000</a>	Bolt-type screw terminals, Cross-connector, Number of poles: 3
GTIN (EAN)	4008190021641	
Qty.	5 ST	

### Additional connection



The additional connection enables a separate voltage tap. This can be used, for example, for the emergency power supply before the main switch or simply as an additional connection within the application.

### General ordering data

Type	WZAF 120	Version
Order No.	<a href="#">1066300000</a>	Auxiliary connection (terminal)
GTIN (EAN)	4008190024642	
Qty.	10 ST	

### End bracket



Weidmüller's range of products includes end brackets that guarantee a permanent, reliable mounting on the terminal rail and prevent sliding. Versions with and without screws are available. The end brackets include marking options, also for group markers, and also a test plug holder.

## WFF 120

**Weidmüller Interface GmbH & Co. KG**  
 Klingenbergstraße 26  
 D-32758 Detmold  
 Germany

[www.weidmueller.com](http://www.weidmueller.com)

## Accessories

## General ordering data

Type	WEW 35/1	Version	
Order No.	<a href="#">1059000000</a>	End bracket, dark beige, TS 35, V-2, Wemid, Width: 12 mm, 100 °C	
GTIN (EAN)	4008190172282		
Qty.	50 ST		

## Protection against contact



Our systems for touch protection ensure greater safety in your cabinet. They provide protection against electric shock caused by accidental contact with live parts due to operation or faults.

## General ordering data

Type	WAP WFF120	Version	
Order No.	<a href="#">1073000000</a>	Bolt-type screw terminals, Cover plate, dark beige, 2 mm	
GTIN (EAN)	4008190475260		
Qty.	20 ST		

## End plates and partition plates



Partition plates and end plates are essential accessories for terminal blocks. Partition plates provide optical and electrical separation of different potentials and functional groups, increasing safety and ensuring a clear structure inside the control cabinet. End plates close the terminal block row on the sides, protect against contact with live parts, and ensure a clean, stable finish. Both components are precisely matched to the respective Weidmüller terminal block series, contributing to safe, compliant, and professional wiring.

## General ordering data

Type	WTW WFF120	Version	
Order No.	<a href="#">1067300000</a>	Bolt-type screw terminals, Partition plate, grey, 2 mm	
GTIN (EAN)	4008190093037		
Qty.	10 ST		

## WFF 120

**Weidmüller Interface GmbH & Co. KG**  
 Klingenbergstraße 26  
 D-32758 Detmold  
 Germany

## Accessories

www.weidmueller.com

## Protection against contact



Our systems for touch protection ensure greater safety in your cabinet. They provide protection against electric shock caused by accidental contact with live parts due to operation or faults.

## General ordering data

Type	WAH 120	Version	
Order No.	<a href="#">1064660000</a>	Bolt-type screw terminals, Hood, beige, 41 mm	
GTIN (EAN)	4008190100797		
Qty.	20 ST		
Type	WAH 120/KURZ	Version	
Order No.	<a href="#">1070460000</a>	Bolt-type screw terminals, Hood, beige, 40.6 mm	
GTIN (EAN)	4008190191047		
Qty.	10 ST		
Type	WAH 120 BL	Version	
Order No.	<a href="#">1064680000</a>	Bolt-type screw terminals, Hood, blue, 41 mm	
GTIN (EAN)	4008190063931		
Qty.	20 ST		

## Mounting support



We offer a broad portfolio of mounting support for easy handling and supplementation of our products. From various tools to insulating sleeves and various screws, our components are matched to each other down to the last detail and thus facilitate assembly in compliance with the respective standards and protective regulations.

## General ordering data

Type	CPSB M10	Version	
Order No.	<a href="#">0156400000</a>	Bolt-type screw terminals, Copper-plated aluminium washer	
GTIN (EAN)	4008190049935		
Qty.	50 ST		

## WFF 120

Weidmüller Interface GmbH &amp; Co. KG

Klingenbergstraße 26

D-32758 Detmold

Germany

## Accessories

www.weidmueller.com

## Cross-connections



The distribution or multiplication of a potential to adjoining terminal blocks is realized via a cross-connection. Additional wiring effort can be easily avoided. Even if the poles are broken out, contact reliability in the terminal blocks is still ensured. Our portfolio offers pluggable and screwable cross-connection systems for modular terminal blocks.

## General ordering data

Type	SMSE WF10/2XM6	Version	
Order No.	<a href="#">1868880000</a>	Bolt-type screw terminals, Busbar, Number of poles:	
GTIN (EAN)	4032248499755		
Qty.	10 ST		

## Blank



WS markers are the perfect match for the W-series connectors. Thanks to their system compatibility, the WS tags can also be used with the I-series and the Z-series. The large marking surfaces do not only permit long character strings but also multi-line text. WS markers are ideal for labels with long, customised character strings. Thanks to the proven MultiCard format, printing with PrintJet CONNECT oder/or Plotter is possible.

- Can be fitted in strips or individually
- Markers in proven MultiCard format

For custom printing: Please send us a file of our labeling software M-Print PRO or M-Print PRO Online (without installation) for your labeling specifications.

## General ordering data

Type	WS 12/6.5 MC NE WS	Version	
Order No.	<a href="#">1609920000</a>	WS, Terminal marker, 12 x 6.5 mm, Pitch in mm (P): 6.50	
GTIN (EAN)	4008190203511	Weidmueller, Allen-Bradley, white	
Qty.	540 ST		

## WFF 120

Weidmüller Interface GmbH &amp; Co. KG

Klingenbergstraße 26

D-32758 Detmold

Germany

## Accessories

www.weidmueller.com

## Custom printing



WS markers are the perfect match for the W-series connectors. Thanks to their system compatibility, the WS tags can also be used with the I-series and the Z-series. The large marking surfaces do not only permit long character strings but also multi-line text. WS markers are ideal for labels with long, customised character strings. Thanks to the proven MultiCard format, printing with PrintJet CONNECT oder/or Plotter is possible.

- Can be fitted in strips or individually
- Markers in proven MultiCard format

For custom printing: Please send us a file of our labeling software M-Print PRO or M-Print PRO Online (without installation) for your labeling specifications.

## General ordering data

Type	WS 12/6.5 MC SDR	Version
Order No.	<a href="#">1609930000</a>	WS, Terminal marker, 12 x 6.5 mm, Pitch in mm (P): 6.50
GTIN (EAN)	4008190456665	Weidmueller, Allen-Bradley, To customer specification
Qty.	108 ST	

## Blank



The Dekafix (DEK) marker is the universal marker for all conductor and plug-in connectors as well as for electronic sub-assemblies. The system is ideal for short number sequences and covers a wide range of ready-printed markers.

Strips for fast installation in only one work step. The printing is easy to read, rich in contrast and available in various widths.

- Large range of ready-to-use markers
- Strips for fast installation
- Terminal markers, suitable for all Weidmüller cable connectors
- Available as blank MultiCard or with standard printing

For custom printing: Please send us a file of our labeling software M-Print PRO or M-Print PRO Online (without installation) for your labeling specifications.

## General ordering data

Type	DEK 5/5 MC NE WS	Version
Order No.	<a href="#">1609801044</a>	Dekafix, Terminal marker, 5 x 5 mm, Pitch in mm (P): 5.00
GTIN (EAN)	4008190397111	Weidmueller, white
Qty.	1000 ST	

## WFF 120

Weidmüller Interface GmbH &amp; Co. KG

Klingenbergstraße 26

D-32758 Detmold

Germany

www.weidmueller.com

## Accessories

## Marker holder

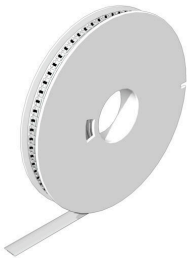


The marker holder offer the possibility of additional mounting of standard markers with a pitch of 5 or 5.1 mm. The angled holders can be optionally snapped together and could be mounted in all standard marking channels of the Klippon® Connect modular terminal blocks. Fitting marker types could be found under the respective accessories of the designation marking holder.

## General ordering data

Type	BZT 1 WS 10/5	Version	
Order No.	<a href="#">1805490000</a>	Accessories, Marker holder	
GTIN (EAN)	4032248270231		
Qty.	100 ST		
Type	BZT 1 ZA WS 10/5	Version	
Order No.	<a href="#">1805520000</a>	Accessories, Marker holder	
GTIN (EAN)	4032248270248		
Qty.	100 ST		

## WS 12/6.5



## WS/ DEK

MultiMark terminal markers use an innovative composite material made from two components. The hard base contour of the marker snaps securely into the connector. The elastic surface finish makes the marker easy to mount. This specially punched material enables the strips to be stretched to accommodate the slight variations in spacing that tend to add up, especially with long terminal blocks. Another advantage: the excellent printability of the surface material guarantees durable and wear-resistant labelling. A print resolution of 300 dpi also produces a very legible script.

Your benefits with MultiMark

- Firm hold and durable printing
- Continuous strips save installation time
- Easy mounting thanks to an innovative composite material
- Large label field for optimal legibility
- High flexibility thanks to manufacturer independence

## General ordering data

Type	WS 12/6.5 MM WS	Version	
Order No.	<a href="#">2619930000</a>	WS, Terminal marker, 12 x 6.5 mm, Weidmueller, white	
GTIN (EAN)	4050118626155		
Qty.	600 ST		

## WFF 120

Weidmüller Interface GmbH &amp; Co. KG

Klingenbergstraße 26

D-32758 Detmold

Germany

www.weidmueller.com

## Accessories

120 mm<sup>2</sup>120 mm<sup>2</sup>

The use of insulated connectors guarantees users consistent electrical connection quality in the long term.

- Wide range of insulated and non-insulated cable lugs and connectors
- Tubular cable lugs according to current market standards (Euroseries)
- Compression cable lugs acc. to DIN 46235
- Sheet metal cable lugs acc. to DIN 46234
- Insulated ring cable lugs to DIN 46237
- Insulated pin cable lugs to DIN 46231

## General ordering data

Type	KP-M10/-120	Version	
Order No.	<a href="#">1498240000</a>		cable lug, terminal end, 120 mm <sup>2</sup>
GTIN (EAN)	4050118307368		
Qty.	50 ST		
Type	KQN-M10/-120	Version	
Order No.	<a href="#">1493330000</a>		cable lug, terminal end, 120 mm <sup>2</sup>
GTIN (EAN)	4050118303070		
Qty.	25 ST		
Type	KRN-M10/-120	Version	
Order No.	<a href="#">1495650000</a>		cable lug, terminal end, 120 mm <sup>2</sup> , 120 mm <sup>2</sup> - 120 mm <sup>2</sup>
GTIN (EAN)	4050118305289		
Qty.	25 ST		
Type	KRN-M10/-120 S	Version	
Order No.	<a href="#">1494920000</a>		cable lug, terminal end, 120 mm <sup>2</sup> , 120 mm <sup>2</sup> - 120 mm <sup>2</sup>
GTIN (EAN)	4050118304626		
Qty.	10 ST		

185 mm<sup>2</sup>185 mm<sup>2</sup>

The use of insulated connectors guarantees users consistent electrical connection quality in the long term.

- Wide range of insulated and non-insulated cable lugs and connectors
- Tubular cable lugs according to current market standards (Euroseries)
- Compression cable lugs acc. to DIN 46235
- Sheet metal cable lugs acc. to DIN 46234
- Insulated ring cable lugs to DIN 46237
- Insulated pin cable lugs to DIN 46231

## General ordering data

Type	KP-M12/-185	Version	
Order No.	<a href="#">1498360000</a>		cable lug, terminal end, 185 mm <sup>2</sup>
GTIN (EAN)	4050118307726		
Qty.	25 ST		
Type	KQN-M12/-185	Version	
Order No.	<a href="#">1493430000</a>		cable lug, terminal end, 185 mm <sup>2</sup>
GTIN (EAN)	4050118303308		
Qty.	25 ST		

## WFF 120

**Weidmüller Interface GmbH & Co. KG**  
Klingenbergstraße 26  
D-32758 Detmold  
Germany

[www.weidmueller.com](http://www.weidmueller.com)

## Accessories

Type	KRN-M12/-185	Version	
Order No.	<a href="#">1495440000</a>		cable lug, terminal end, 185 mm <sup>2</sup> , 185 mm <sup>2</sup> - 185 mm <sup>2</sup>
GTIN (EAN)	4050118304947		
Qty.	25 ST		
Type	KRN-M12/-185 S	Version	
Order No.	<a href="#">1494990000</a>		cable lug, terminal end, 185 mm <sup>2</sup> , 185 mm <sup>2</sup> - 185 mm <sup>2</sup>
GTIN (EAN)	4050118304169		
Qty.	10 ST		